



P E R S O N A L
W A T E R C R A F T S • 2 0 1 6

www.belassi.com



For your experience
over the limit.



the Company

Located in the engineering heart of Austria, **Belassi** looks back on a heritage of high performance products. The new state-of-the-art development centre lays the foundation to **our own engine** development, product design and engineering. Belassi is unique in its specialization in personal watercraft.

the Philosophy

Belassi is a lifestyle, a way of living for individuals. Diving into the world of Belassi gives insight into the Austrian „Manufaktur“, where **engineers** meet **artisans**. We strive to combine the forces of engineering and technology with the attention to detail and individualism of true craftsmanship.

B3R

The arrival of the new B3R with astonishing 333hp represents a new generation of personal watercrafts.

The smooth torque delivery, tailored seat for sporty rides and groundbreaking steering precision allow for outstanding agility and drivability, making the ride **your experience over the limit.**

With the I3C16™ turbocharged engine the most powerful 3-cylinder PWC-engine in the world, the new **Belassi** B3R is destined to absolute performance perfection.

333 HP





Technical Specifications

Engine	13C16™, Marine 3 cylinder - 4 stroke
Power	333 hp
Displacement	1602 cc
Intake System	Turbocharged with watercooled intercooler. Multi-point fuel injection
Features	CMHPC™ Compression Molded High Performance Composite hull and counterhull structure, ERev™ E-hydraulic Reverse System with axial displacement cylinders, VETS™ Variable E-hydraulic Trim System with axial displacement cylinders, SMPI-K™ sequential multipoint injection with knock control, gps, anti-theft system, adjustable sponsons
Cooling System	Closed loop cooling system with heat exchanger integrated in the jet pump
Rider Capacity	1-3 persons
Weight (dry)	380 kg
Dimensions	L= 3.50 m / 137.79 in - W= 1.20 m / 47.24 in - H 1.15m / 45.28 in
Fuel Capacity	55 L / 18.5 gal



B35

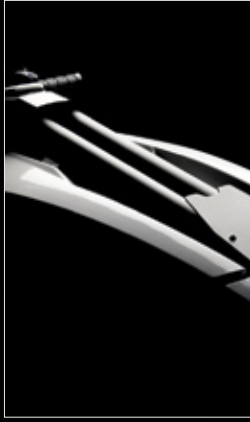
The new hull design has been accurately studied and tested by some of the best riders in the world.

Become one of them with this **unmatched stand-up PWC** and benefit from 180 hp coming from an outstandingly efficient engine.

The cavitation-optimized jet pump position provides high speed stability and allows you to drive close to your limits. **Acceleration** from 0 to Vmax **beyond your expectations.**



180 HP



Technical Specifications

Engine	13C16™, Marine 3 cylinder - 4 stroke
Power	180 hp
Displacement	1602 cc
Intake System	Multipoint fuel injection - Naturally aspirated
Features	CMHPC™ Compression Molded High Performance Composite hull and counterhull structure, SMPI-K™ sequential multipoint injection with knock control, re-inforced aluminium riding plate
Cooling System	Open loop cooling system
Rider Capacity	1 persons
Weight (dry)	199 kg
Dimensions	L= 2.45 m / 96.46 in - W= 0.73 m / 28.74 in - H 0.67 m / 26.38 in
Fuel Capacity	17 l / 4.5 gal





the Engine

The IBC16™ engine, developed, engineered and manufactured by Belassi, is the heart of our personal watercraft range. With an astonishing 180 hp, naturally aspirated, in our B3S and unmatched 333 hp, turbo-charged, in our B3R, the IBC16™ sets the benchmark for personal watercraft engines.

© 2016 Belassi GmbH. All rights reserved.

The Belassi logo is a registered trademark. Belassi GmbH. reserves the right at any time to discontinue or change specifications, prices, designs, features, models or equipment without incurring obligations.

Product performance may vary depending on general conditions, ambient temperature, altitude, riding ability and rider/passenger weight. Publication, reprints, reproduction in whole or detail of this brochure is not permitted without explicit written approval of Belassi GmbH.

